

Newsletter 24th February 2023

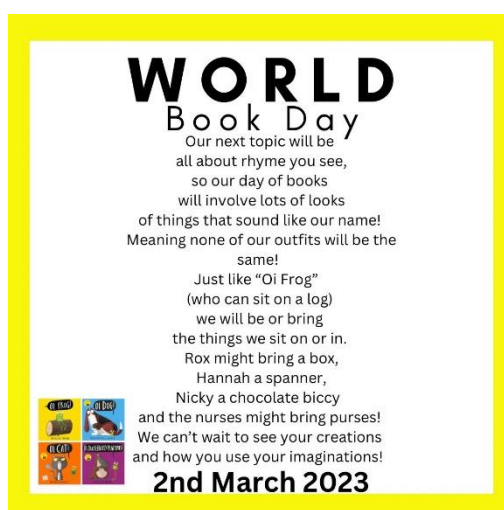
A message from The Headteacher



It has been a busy first week in school and lovely to hear the children's news about their half term holidays.

Teaching and therapy staff have begun meeting this week to set new targets. You will receive a review of your child's previous targets today and will receive a new set of targets over the next 2 weeks (before parents meetings).

Don't forget next **Thursday 2nd March is World Book Day!** We look forward to seeing your creative costumes/props linked to the book 'Oi Frog'.



Key Diary Dates

World Book Day	Thursday 2nd March
FOG coffee morning	Friday 3rd March 9.30am
Red Nose Day	Friday 17th March
Friends of Greenmead Quiz	Thursday 23rd March (more information to follow)
Signing with SALT/Makaton coffee morning	Wednesday 29th March 9.30am



Stars of the week



Titan class - **Alisey** for attempting to put a sentence together

Mercury class - **Maisie-May** for her impressive independent bench sitting in Good Morning

Jupiter class - **Eda** for communicating how she was feeling during our sensory story

Europa class - **Ben** for initiating interactions with peers and consistently great work across the entire week

Neptune class - **Bhavika** for starting to use her standing frame again

Venus class - **Cerim** for excellent following of instructions all week

Mars class - **Nana** for independently putting her coat on!

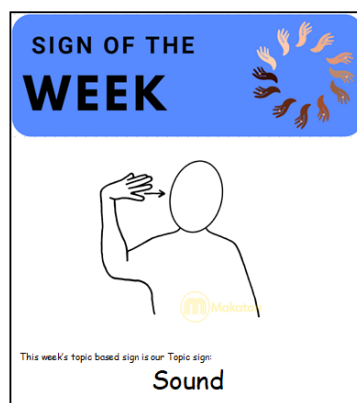
Pluto class - **Abdullahi** for sounding out his name correctly

Staff shout outs



Shout out to **Sam** in Europa class for creating an incredible Oi Frog tuff tray activity (see the pictures below!)

Sign of the week - Sound





Curriculum

Europa Class had an introduction to one of the **new topic books this week**. We started off with reading the story and exploring an edible Oi Frog inspired tuff tray!



Personal Assistant required

About Chinmay: Chinmay is physically fit, but has ASD, GDD and is non-verbal, so someone with the knowledge of speech therapy and autism will be good for help.

Chinmay lives very close to Greenmead (5-7 minute walk). He mainly enjoys water play like bathing, paddling pool etc. Then running around, swing is of his interest. Watching Peppa Pig on his mobile and TV is his favourite.

For more information please contact Mrs Pallavi Joshi joshipallavee@gmail.com
07527631031

Personal Assistant/carer required

About Neo: Neo is an active, social, 6-year-old that loves getting out and about. He is PEG fed, nonverbal and has global developmental delay. He also has epilepsy and uses a wheelchair for London distances. He loves interacting with others and his favourite things to do are playing football, going to the arcade and swimming.

Initially this position is for 12 hours a month however this will be increasing over the next few months and there will be additional hours in the holidays.

For more information please contact Chelsea on 07944106349
Chelseabell92@hotmail.co.uk

SIGN THE PETITION



JOIN THE
CAMPAIGN FOR A
LIFT AT EAST
PUTNEY STATION



Sign the petition today - scan this QR code
or visit www.fleuranderson.com

We need step-free access at East Putney Station - for wheelchair users, for prams and buggies and for those with mobility issues.



Delivered by local residents. Promoted by Putney Labour, 35 Felsham Road. Printed at Solopress, 9 Stock Road, Southend-on-Sea, SS2 5QF.