

Stars of the Week

Lila	Excellent listening across the week
Royem	Being friendly and contributing to our youth group with Ronald Ross
Rashaad	Being amazing on the bikes this week
Cerim	Being a chef superstar
Jose Carlos	Engaging in art-based activities
Saad	Trying his best to take part in activities and sessions with a smile on his face
Aisha	Taking 15 steps throughout the week with an adult
Myles	Fantastic work in all of his sessions this week



Shout-out to Chloe for supporting a pupil during private therapy visits over the last week

Shout-out to Nicky from one of our parents for supporting with Covid information and being so kind

Shout-out to Kevin for being our traffic manager and helping to keep everyone safe when vehicles are moving in and out at the beginning and end of day

Shout-out to all the women in our school community who inspire us each day

Welcome

Welcome to Lila who is our new Therapy Admin Assistant. Lila will be working at Greenmead on a Monday and Tuesday.



St Paul's Pantry

A complimentary bag of groceries from community donations available from St Paul's Church on Augustus Road in Southfields. All are welcome and there is no referral process and no vouchers are necessary.

The next dates are;

Thursday 17th March
Thursday 7th April
Thursday 21st April

6.30-8.00pm



If you are unable to collect donations yourselves then please contact:

pantry@stpautsparkside.org.uk

or phone **020 8788 2024** and they will arrange a delivery for you.

Please pass onto anyone who may benefit from this support.



Key Diary Dates

Evaluated Autumn/Spring IEPs to be sent home
Friday 11th March

Easter Egg Hunt and Tradition Egg Rolling Competition
Thursday 31st March (see details below)

New Spring/Summer IEPs to be sent home
Friday 1st April

End of term
1st April (1pm finish for pupils)

Pupils and staff return to school
Tuesday 19th April

Parent/Teacher Evenings
Tuesday 19th or Wednesday 20th April

INSET day (no school for pupils)
Friday 29th April

May Bank Holiday
Monday 2nd May

Half term
30th May – 3rd June

Pupils and staff return to school
Monday 6th June

INSET day (no school for pupils)
Friday 24th June

Additional school closure in lieu of Queen's Jubilee
Friday 1st July

End of term (1pm finish for pupils)
Friday 22nd July



Term dates for 22/23 (next academic year) have been published and are on the school

Updated School Policy

The governors have updated the Complaints Policy which will be used when there are occasions when parents/carers raise concerns or complaints. This can be found on the school website or you can request a paper copy through the admin office.

Easter Fun for Pupils and their Parents/Carers

We're delighted to join in with FOG to host an in-person event! Yay! Come along to your child's pathway allocated time slot and enjoy Easter fun with your child and their friends. A great opportunity to also meet other parents in the pathway.



Thursday 31st March in the front playground

Time slots as follows;

9.45-10.45am (Formal Pathway – Mars and Pluto)

11.00-11.45am (Semi-formal – Venus, Neptune and Titan)

1.30-2.30pm (Sensory – Europa, Jupiter and Mercury)



If your child is only in school part-time don't worry, you won't miss out – speak to your child's class teacher and find out when you'll be able to join in with another class.

Activities include;

Make an Easter bonnet with your child and bring it in on the day – there may be some prizes



Hide and seek eggs

Easter goody bags

Traditional egg rolling competition

We look forward to seeing you there!



Wimbledon AFC have kindly donated Easter eggs to all the pupils at Greenmead and we'll hand these out on the last day of term. Thank you Wimbledon AFC.

Curriculum learning for this half term

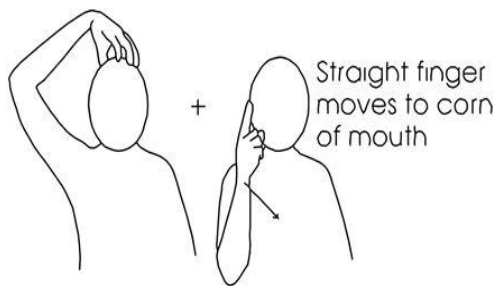
We had so much fun with the Time Travellers theme last half term that some classes have continued the theme into this half term to get the most out of the learning opportunities, particularly, where we may have had classes partially closed or pupils out due to Covid in the earlier part of the half term. It is for this reason that parents have not received a new curriculum map for this half term. To give you an idea of what is being taught in the curriculum for the rest of this half term pathway leaders have shared the following information;

Semi-formal (Titan, Venus and Neptune Classes): We have continued our 'Time Travellers' topic learning key concepts such as 'now'/'long time ago' and 'same'/'different'. All 3 classes have focussed on the Greeks/Romans and explored clothing, food and inventions (i.e. drainage systems). Pupils will be consolidating their knowledge and skills in repetitive sessions such as shared attention, sensory stories and phonics. Some classes who finish this block of learning will then be moving on to a Literacy focus of call and response poetry, using 'The Pudding's Revenge' by Kathryn Evans. This is to introduce rhyming words and rhythm. We will also be designing our own puddings and exploring textures and how we can change these, i.e. raw egg to a cooked egg/bread to toast. Towards the end of the half term everyone will be joining in with lots of different fun Easter activities!

Formal Pathway (Pluto and Mars Classes): We are exploring children's books this half term having had so much fun in World Book Day. We are looking at the features of stories such as characters and plots and how books change as we get older. So far, we have enjoyed learning about Dear Zoo, The Very Hungry Caterpillar, Room on the Broom and will be looking at Winnie the Pooh and George's Marvellous Medicine for the rest of this half term. In our wider maths curriculum, we are learning about position and direction.

Sensory Pathway (Jupiter, Mercury and Europa Classes): This half term we have chosen to continue on with our topic of The Great Ice Age. We found lots of things we enjoyed and so are now consolidating our understanding and preferences of these. We have also particularly enjoyed our sensory story and so are now looking in more detail at our two focus books; How to Wash a Woolly Mammoth and Cave Baby. We have also, during our creative sessions, enjoyed making cave paintings and so will be looking further at our mark making, colours as well as adding a weekly colour themed cooking session. We will finish the half term with an Easter themed week.

Sign of the Week



Straight finger moves to corn of mouth

Our sign of the week is 'Queen'.

Check out our Instagram page to see pupils using the sign.



Don't let Measles, Mumps and Rubella into your child's world

The risk of catching Measles, Mumps and Rubella increases when your child goes to nursery. When you don't get your child their MMR vaccines, they're left exposed to becoming seriously ill.

Protect your child with both MMR vaccines. Contact your GP to book their first or second dose. Find out more at nhs.uk/MMR

