

Home Learning

In the event of a class closing, Home Learning materials will be emailed to you from our new homelearning@greenmead.wandsworth.sch.uk mailbox.

You will receive the class curriculum map for the half term in an initial email. Later that day you may receive a second email regarding ongoing Homelearning if the class is potentially to continue to be closed. Please respond to this email with your choice from our Home Learning Offer.

On day 2 of a class closure a 'Home Learning Grid' will be provided as part of our universal offer. This will consist of activities for you to choose from linked to our half termly topic 'Lights, Camera, Action'.

Please choose one or two activities a day to focus on and we would love to hear or see photos of how your child is getting on at home.

Physical Development

We follow an adapted PE curriculum that links to the Key Stage 1 National Curriculum. This term we continuing to explore how to move our bodies through dance with the Royal Academy of Dance (RADiate)

'GoNoodle' provide a wonderful range of dance videos that you can access at home on YouTube.

Useful info



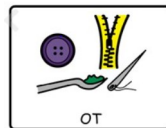
Follow us

'greenmeadschool'

Curriculum Pathway Links

For some children in the Formal classes there will be identified areas of the curriculum where they will access semi-formal or sensory learning. Your child's class teacher will discuss this directly with you, if this applies to your child.

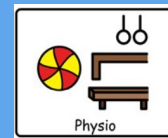
School Based Therapy team



OT



Speech Therapy



Physio

Barbara is the school's Clinical Lead.

OT: Charlotte

SLT: Anna

PT: Emma

There are 8 children in your child's class.

Class Teacher: Tim Twomey



Creators:

Lights, Camera, Action!



CURRICULUM MAP

Formal Pathway- Mars
Autumn 2
2021-2022

'Every Achievement Counts'

Formal Curriculum

Areas of learning covered include:

Communication, Language and Literacy Understanding Literature, Recording, Writing for a Purpose, Phonics and Reading + Communication IEPs
Mathematics and Cognition: Maths (Number, Measurement, Geometry), Problem Solving Skills + Cognition IEPs
SEMH/PSED: Zones of Regulation, Eating and Drinking, Self-Care + SEMH IEPs
Topic: Half Termly Focus on Art + Design, History, Geography, Music, Science or an author study
Physical Development: PE + Gross Motor/Fine Motor IEPs

Communication, Language and Literacy

This term we are exploring 'Video Literacy'. We will be looking at films and how they tell stories (even ones without sound!)

We will be looking at letter and invitation writing in our 'writing for a purpose' sessions as well as 'recording'

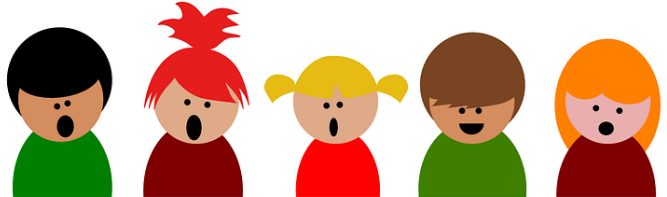


We will continue with phonics and learning to apply our phonetic knowledge and reading high frequency words - we will send home individual information regarding your child's learning in this area.

Topic: Expressive Art and Design

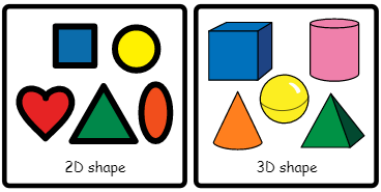
BREAKING NEWS: Mars Class's annual Christmas Shop is returning and it bigger and better with the help of Pluto Class!

Every week, Pupils across the formal pathway will be working with Karen on designing and making their own products to sell.

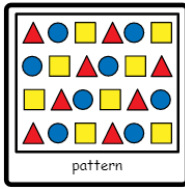


Mathematics

We are going to continue consolidating our understanding of numbers between 0 and 20 following the principles of number.



In our wider maths sessions we are exploring Shape and Pattern including 3D shapes. We will be looking at their properties and using them to describe, sort and group them.



We will also be continuing our music project with Ronald Ross and Wandsworth Music Service. Our concert is on the 23rd of November!

Our 'Creators' topic doesn't stop there! We are continuing to have Dance in PE as well as a weekly focus on film music!