

Stars of the Week

Poppy	Working hard to communicate her choices throughout every day this week. She has also been keeping the class entertained with her pranks!
Keelia	Fantastic high kneeling and working hard on stepping her in standing sling
KC	Being calm and doing good work this week
Nandi	Returning to school after surgery and immediately working hard on her physio
Mason	Fantastic portrait painting of Kevin, our premises manager
Aisha	Being engaged and focused all week and for her interactions with a peer
Rose	Consistently communicating her feelings and being intentional in her choice making of what she wants to do in the sessions using her PODD book
Rashaad	Used his first word of ‘no’ in the classroom when being asked to do something by an adult
Myles	For correctly identifying the sound of a fire engine from a choice of two and imitating the sound

Shout-out to Hannah, our Instagram queen. Thank you for sharing our wonderful pupils and school and making us smile with pride for all the achievements in our Throwback Thursday posts.

Special shout-out to Therapy for having such a friendly and great to work with team!

Shout-out to Tasha, who has helped in Europa class this week and has come with a positive, proactive, can-do attitude.

More Welcomes

This week we’d like to welcome Ellen back after her maternity leave. Ellen is part of our physio team and will be working on Mondays and Tuesdays. Also welcome to Keshav, a new governor to our Governing Board.

Parents’ Walk and Chat

“I am arranging a morning walk & chat for parents/carers/friends of the school. The first walk will be on **Friday 15th October @ 9.15am** from outside reception by the bike rack (please don't go inside). The plan is to walk up to the common and have a 30 min walk. It is a chance to meet others and get a few steps in. We will do this monthly but if popular it could be weekly. Any queries please email friends@greenmead.wandsworth.sch.uk”

Jo Elgarf



Foodbank Donations

We will be collecting donations for our local foodbank at St Paul’s Pantry again this year.

St Paul’s Pantry are doing fantastic work in our local community supporting those in need. They were incredibly grateful for the generosity of the families and staff at Greenmead last year.



If you are able to donate, please send or bring your donations in by **Friday 15th October**.

Priority items for the foodbank are:



tinned tuna or salmon, tinned vegetables (including sweetcorn, tomatoes and carrots), rice pudding, custard, soups, cook-in sauces, rice, laundry tablets, washing up liquid, shampoo and conditioner, body and handwash, toilet paper, nappies

Key Diary Dates

15.10.21 Parents' Walk and Chat (9.15am)

25.10.21- 29.10.21 **HALF TERM**

1.11.21 Autumn 2 begins

5.11.21 Evaluated IEPs home (not for new pupils)

15.11.21 Autumn/Spring IEPs home

22&23.11.21 Parents' Evening



Save the Date

The FOG committee have started to plan for some in-person events this year, Covid regulations depending. Details will be shared closer to the time but do save these dates in your diary.

Valentines Bingo for the Whole Family

Thursday 10th February (3.30pm)

Quiz Night for Adults

Thursday 28th April (evening)

Summer Fair for the Whole Family

Saturday 18th June (late morning/early afternoon)



Part or Full Class Closures

Unfortunately, we've had a bit of a tricky time this half term with having to close or part close classes which breaks my heart but is unfortunately a reality in the current climate.

When we have staff shortages it is not safe to fully open some classes in line with health and safety of pupils and staff and in line with our Covid risk assessment.

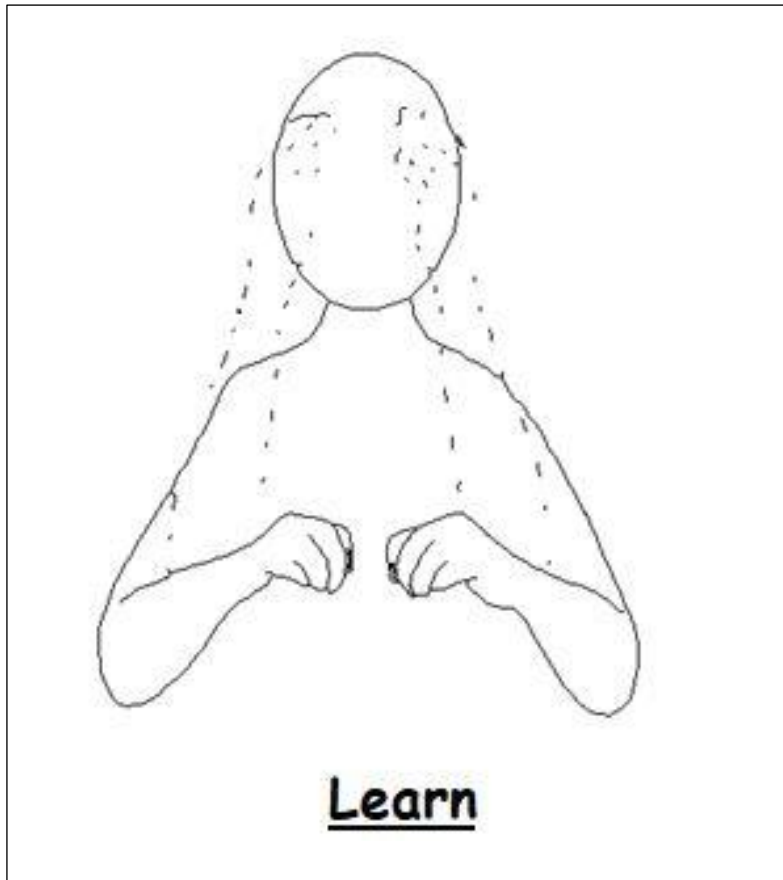
Staff absence is not always Covid related and is sadly unavoidable when staff are ill, however, our Covid risk assessment also means that we can't move staff around from other classes. We are only ever able to respond to staff shortages in the mornings after staff have called us between 7am-8am.

When we have staff shortages we need to make decisions about how to keep pupils in school fully supported in terms of medical, care and safety needs. This may be a full closure of a class or a partial closure of a class. The senior leadership team make these decisions based on confidential information we know about families which are regularly reviewed as family situations change and we would not share these decisions with the whole parent group. I understand that this can be difficult for parents to then arrange childcare and work commitments and we will always try our very best to communicate closures or part-closures as early as possible.

When we need to close a class there is a home learning offer which will include an email on day 1 with the class curriculum map and a link to the class' themed book for the week or half term. On day 2 you'll get an email with a grid of learning activities that you can choose from and a home learning offer. This includes a universal offer, a pathway offer or an enhanced offer. Information about these are on our website but will also be sent to you on day 2. We understand that every family circumstance is different which is why there are options to the home learning offer so that this can best meet the needs of each family. The class teacher will then liaise with you for subsequent home learning depending on your choice.

If you have any questions about this please email Toni at head@greenmead.wandsworth.sch.uk

Sign of the Week



Do also pop over to our Instagram page to see pupils in our Formal Pathway using the sign and see how many times you can practice using this with your child over the coming week.