

Stars of the Week

Willow	Participating in making a Jamaican dumpling mixture by exploring all the different textures with her hands
Anya	Being an excellent role model in her colourful semantics sessions
Ellie-May	Trying really hard all week and using the iPad to communicate independently
Louisa	Enthusiastically taking part in her cooking lesson and telling the adult all about it
Nora	Consistently signing ‘me’ when she wants a turn during group activities
Jayson	Fantastic high kneeling whilst playing the piano
Gaspard	Amazing work in phonics all week
Clarisse	Being engaged & focused and participating in most sessions this week

Shout-out for Karen for her fantastic cooking lessons and encouraging all pupils in the formal pathway to work collaboratively



Governor Monitoring Visit

Over the last two weeks we’ve had our school governors come in for their half termly monitoring visits. It’s been lovely to see them in person again. This half term’s theme was observing how well pupils have settled back into the new term and our total communication strategies being implemented. This is what they had to say;

Such a lovely environment with focused and happy pupils.

A real treat to be a part of the morning activities!

Lots of differentiation to meet the needs of all pupils.

Brilliant at keeping all children simultaneously engaged. Keeping lesson on track as planned whilst at the same time addressing individual needs of particular pupils and different times.

Such joy in the yoga session!

I am walking around with a huge smile on my face after my visit!

So interesting to see the effective use of the ‘finish’ symbol for ending a child’s session on the big screen. It enabled a calm transition.

Foodbank Donations – date extended

We will be collecting donations for our local foodbank at St Paul’s Pantry again this year.

St Paul’s Pantry are doing fantastic work in our local community supporting those in need. They were incredibly grateful for the generosity of the families and staff at Greenmead last year.

If you are able to donate, please send or bring your donations in by **Thursday 21st October**. Thank you to those who have already donated.

Priority items for the foodbank are:

tinned tuna or salmon, tinned vegetables (including sweetcorn, tomatoes and carrots), rice pudding, custard, soups, cook-in sauces, rice, laundry tablets, washing up liquid, shampoo and conditioner, body and handwash, toilet paper, nappies

Key Diary Dates

25.10.21- 29.10.21 HALF TERM

- 1.11.21** Autumn 2 begins
- 5.11.21** Evaluated IEPs home (not for new pupils)
- 15.11.21** Autumn/Spring IEPs home
- 22&23.11.21** Parents' Evening



Save the Date

The FOG committee have started to plan for some in-person events this year, Covid regulations depending. Details will be shared closer to the time but do save these dates in your diary.

Valentines Bingo for the Whole Family

Thursday 10th February (3.30pm)

Quiz Night for Adults

Thursday 28th April (evening)

Summer Fair for the Whole Family

Saturday 18th June (late morning/early afternoon)



contact
For families
with disabled children

In Contact
WANDSWORTH



Coffee Mornings

Contact are going offering a mixture of online and face to face coffee mornings. Some will be their regular parent catch ups and others will be themed. The dates are as follows;

- Friday 22 October— Coffee Morning Face to Face
Friday 12 November—Themed Coffee Morning Online
Thursday 25th November—Coffee Evening Online
Friday 3rd December—Themed Coffee Morning Face to Face
Thursday 9th December—Themed Coffee Morning Online
Friday 17th December—Coffee Morning Face to Face

Walk and Talk

- Wednesday 20th October—Battersea locality
Wednesday 24th November—Tooting locality
Wednesday 15th December—Roehampton locality

Half Term Sports Activity

Contact are able to offer a Half Term Disability Sports session for families. This will be taking place on Friday 29 October at 11am (weather permitting) in Battersea Park.

To find out more about any of the above;
You can email the office at wandsworth.office@contact.org.uk or visit their Facebook page on www.facebook.com/contactinwandsworth

Christmas Shoebox Appeal

Samaritan's Purse UK is an international relief and development organisation who work in communities of need in Africa, Eastern Europe and Central Asia. Every Christmas they run an appeal over Christmas called Operation Christmas Child. They collect shoeboxes filled with personal care items, toys, stationary, etc. donated to them and send these around the world to the communities they work in.

Last year Greenmead staff and families sent 58 shoeboxes across the world! We'd love to do this again and try to reach a target of 65 this year.

The shoeboxes have arrived and next week we will be sending home a pre-printed shoebox to each family and member of staff and the idea is to choose a boy or a girl and an age range that you want to buy for and fill the shoebox. This might be something fun for you to do with your child over half term.

You can send your filled shoebox back to school and we will deliver them to a drop off point in Southfields.

More details to follow but you can get more information by visiting the Samaritan's Purse website <https://www.samaritans-purse.org.uk/what-we-do/operation-christmas-child/>



Wandsworth SEND Local Offer

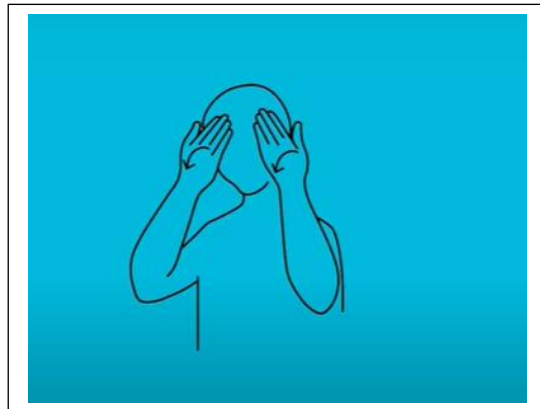


The **SEND Local offer** pages on THRIVE Wandsworth's website have information and links about support/services/advice relating to children and young people with Special Educational Needs and/or Disabilities and their families. For further enquiries please email **CDR-WAND@wandsworth.gov.uk** or call **020 8871 8907** or go to **Wandsworth's SEND Local Offer | THRIVE Wandsworth**

WAND card (0-17 yrs) available to all children and young people on the Children with Disabilities Register (that is all pupils at Greenmead). The WAND card indicate that a child has a special education need and/or disability. It gives eligibility for a range of discounts and concessions at participating local activities, leisure centres and parking. To find out more visit the THRIVE Wandsworth's website.

Sign of the Week

Sign of the Week



Respect

Do also pop over to our Instagram page to see the sign being modelled and see how many times you can practice using this with your child over the coming week.



**Have a lovely weekend everyone!
Only one more week before the holidays!**