

Achievements this week ...



| | |
|-----------------|---|
| Jayson | Purposeful switching and attending to songs on the big screen |
| Aurora | Fantastic home learning; doing an experiment and sharing the video with friends in class |
| Clarisse | Purposeful communication and interaction with Lauren during a music session |
| Bhavika | Great counting in games. |
| Oliver B | Helping to wash up after lunch. |
| Alhagie | Being brave and exploring paint to make an aeroplane |
| Abdul | Completing all of his work this week |
| Eda | Being well regulated this week and when she was in the blue zone being able to indicate she was tired |
| Nandi | Lovely drawing of the solar system |

Shout-out to Paola for being amazing in Europa class this week! Thank you so, so much!

Shout-out to Jaq for a wonderful new library display.

Holidays and INSET Days

Please remember that school is closed to pupils from **Wednesday 31st March at 1pm until the 16th April** for the Easter Holidays. School will also be closed on **Monday 19th April** to all pupils as we have a planned staff INSET day. Pupils return on **Tuesday 20th April**.

Please also remember that we have INSET day on **Friday 30th April**. The school is closed for pupils.



May Day Bank holiday is **Monday 3rd May**. No school for pupils.

Half term week is the week of the **31st May for one week**.

Back for the second half of the summer term on **Monday 7th June**.

End of term and summer holidays **23rd July at 1pm**.



Soundabout Moveabout Challenge

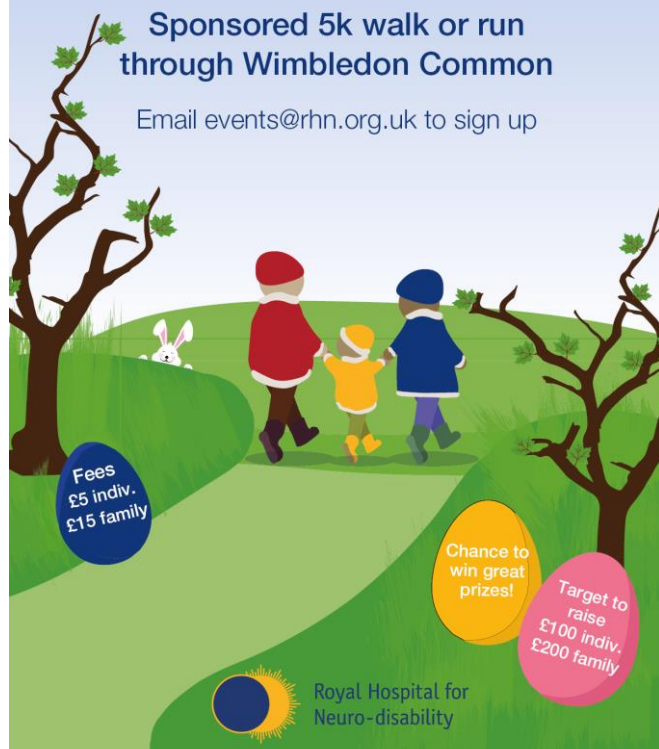
Hannah, in Pluto class, has been taking part in this challenge to raise money for Soundabout. She exceeded her first target of walking 600kms and is now very nearly at 1000kms to be completed by the end of March. Follow how she is doing and sponsor Hannah by going to www.soundabout.enthuse.com/pf/hannah-owen or send your donations into school and Hannah will add it to her funding page.

RHN Easter Trail

Saturday 10 April 2021

Sponsored 5k walk or run
through Wimbledon Common

Email events@rhn.org.uk to sign up



Raising Money for the Royal Hospital for Neuro-disability

Why not get outdoors during the Easter break and take part in a family sponsored walk or run to raise money for a like-minded charity.

The Royal Hospital for Neuro-disability supports adults with brain injuries, is one of Greenmead's neighbours and has supported us in the past by attending our Summer Fair and have made provision for the hospital site to be our contingency plan should there be an emergency situation and the need to evacuate urgently from our school site.

If you are taking part please can you let us know so that we can arrange a meet up on the common and perhaps walk together – being socially safe of course!

Southfields Foodbank at St. Paul's Pantry

St. Paul's Pantry on Augustus Road is still up and running and they have extended their services. It is currently open on the first and third Thursday of the month. This means they will be open again on 1st April and 15th April from **6.30pm – 8.00pm**.

If you are unable to collect the bags, they can deliver to local families too.

The pantry is a small scale foodbank offering free groceries to anyone who needs them. No referrals are necessary.

To find out more please phone **0208 788 2024** or email pantry@stpaulsparkside.org.uk