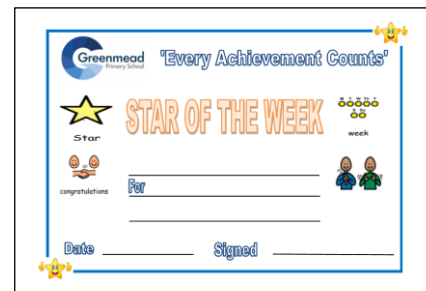


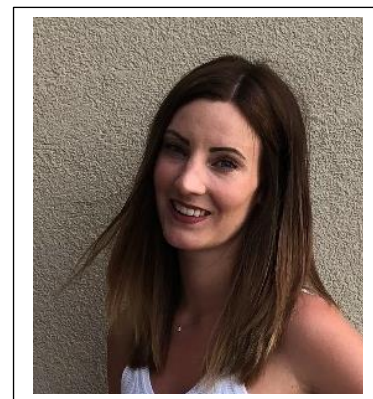
Achievement Certificates awarded this week to ...

Patrick	For using his new auditory scanning board to make choices and to tell us he is too hot chatting lots to everyone in class too.
Nora	Using a walker for the first time at school and being able to walk the length of the corridor
Elodie	Fabulous floating in the pool and working hard in physio
Nana	Putting her coat on independently
Joe	Pulling his trousers up independently
Aiza	Matching rhyming objects all by herself
Alhagie	Pulling his zip down all the way on his coat
Rayea	Choosing her snack using her PECS book
Erin	Excellent use of her ‘more’ symbol in Good Morning session



Welcome

Hi, I'm Alanna! I am a qualified Play and Creative Arts Therapist and I have recently joined the team of Therapists here at Greenmead Primary. I will be working with children weekly and through using fun activities and resources such as toys, games and craft materials, I will be helping children to grow in self-esteem and confidence. My interest in Play Therapy developed from my previous experience as a Primary Teacher. Working with many children and their families, I began to recognise the difficulties faced by families outside of school and how these can impact a child's behaviour and learning when at school. Play Therapy allows me to work with children at their level, to explore difficult feelings or behaviours, overcome traumatic experiences and develop positive coping strategies. I feel very lucky to be working with some amazing children here at Greenmead. Alanna will see children assessed via referrals from class teachers.



Fun on our new equipment

There has been a new delivery to school; we have a new, updated smart platform. We are very grateful to Rokeby School for their donation to Greenmead so that we could buy this at a cost of £10,000. The smart platform is a resource to teach some children cause and effect using switches and as appropriate, for some children who may in the future be able to use a power chair independently. We are really excited because it's possible to also use this outdoors so we'll be having lots of fun driving on the painted road markings in our playground.



FOG News

30th November

FOG Coffee Morning 11.30-12.30pm

16th May

Quiz Night

6th July

Summer Fair

Friends@greenmead.wandsworth.sch.uk

School Diary Dates for Autumn Term

14th December

Whole school Nativity Play (10.15am)

18th December

Christmas Lunch

19th December

Joint Christmas Music Concert with Ronald Ross

20th December

Visit from Santa

21st December

Last day of term; school finishes at 2pm for pupils

7th January

Staff INSET day – school closed for pupils

8th January

Back to school for all pupils

Happy Thanksgiving to our American families, staff and friends.



contact

For families
with disabled children

Christmas Fair

For our families and their friends

WHEN: Wednesday 12 December

TIMES: 10.00am—1.00pm

WHERE: The Early Years Service, 1 Siward Road, London, SW17 0LA



We will have...

- * Scrumptious cakes
- * Candles galore
- * Guess the weight of the cake and sweets in the jar!
- * Fantastic rafflebe in it to win it!!
- * Tombola

- * Winter Flowers
- * Avon Products
- * Sports Disability Coach
- * Personal Stylist
- * Sweet & Biscuit Gifts
- * Beautiful ornaments
- ◇ Come and have a tea some cake and a chat!

